

Denis & Collette O'Donovan

Wild Atlantic Way



Background

- **1990 Agricultural College Darrara, Clonakilty**
- **1996 Came home farming, parents retired**
- **1997 Completed a Diploma in Agriculture**
- **1997 Monitor Farm in Carbery/ Teagasc Prog.**
- **2000 Collette married me !**
- **2012 Milk Production Partnership**
- **2012 Purchased land**

Labour

- **Myself, Collette, Eoghan**
- **My Dad DJ**
- **Regular Relief Milkers**
- **Contractors**



Influences

- **Discussion Groups**
- **Benchmarking with Profit Monitor**
- **“Put all your eggs in one basket and put both hands under the basket”**

Discussion Groups

All-Ireland EBI discussion group competition



That winning feeling – 2007 EBI winners Greenfields Discussion Group.

Influences

- **New Zealand trip in 2007**
 - **X bred cows**
 - **50% of herds calved in 2 weeks**
 - **Lincoln University**
 - **Money, Breeding, Grass (MBG)**
 - *“You can borrow money and hire labour”*

Arthur Bryan

Farm Development

2008

- **20 unit milking parlour**
- **Bulk milk tank**
- **Out wintering wood chip pad**
- **Slurry lagoon**

2017

- **Topless cubicles**
- **Farm Roadways & water upgrade**

Breeding ⁽¹⁾

- **EBI €155**
- **88% 6 week calving rate in 2018**
- **13% replacement rate in 2018**
- **6 % NIC (10 weeks & 2 days breeding)**

Breeding (2)

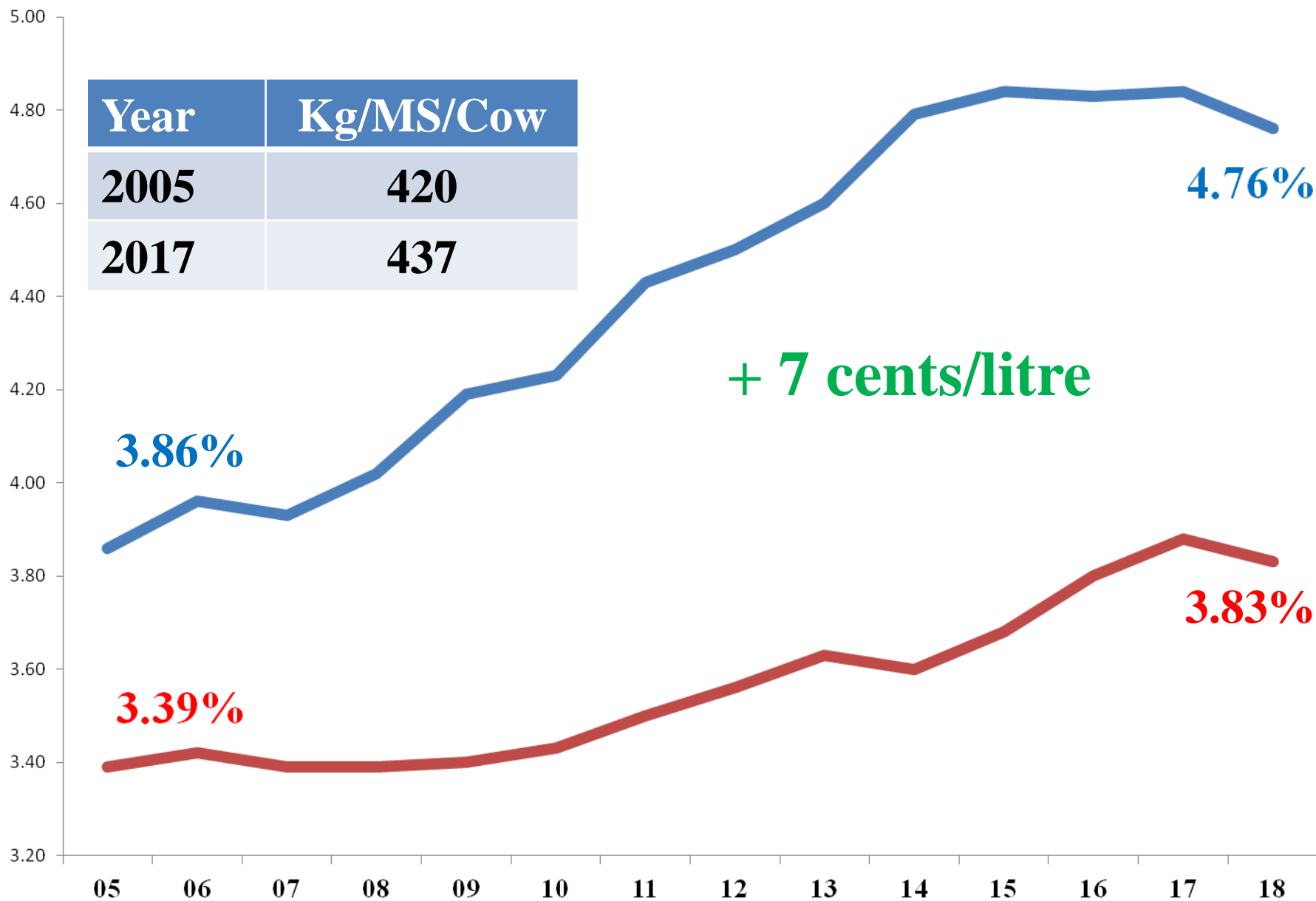
- **How was this achieved ?**
 - **Extra heifers brought into herd in 2012-13**
 - **Late calvers sold for 2 years**

Herd Fertility

- **Cow body condition**
- **DIY AI twice a day**
- **Tail Paint, tail paint, tail paint**
- **Vasectomised bulls**
- **Plenty bulls for mopping up**

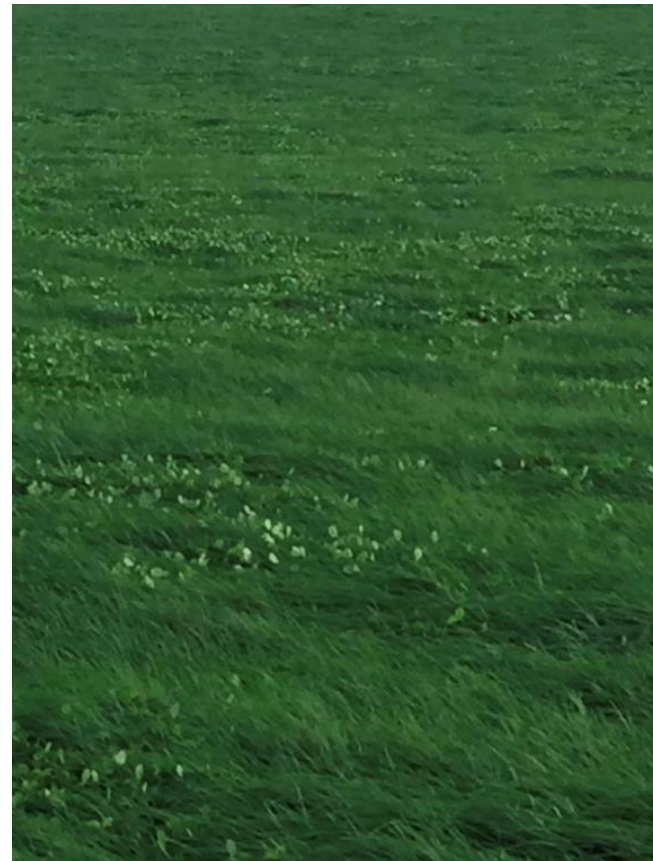


—Fat% —Prt %



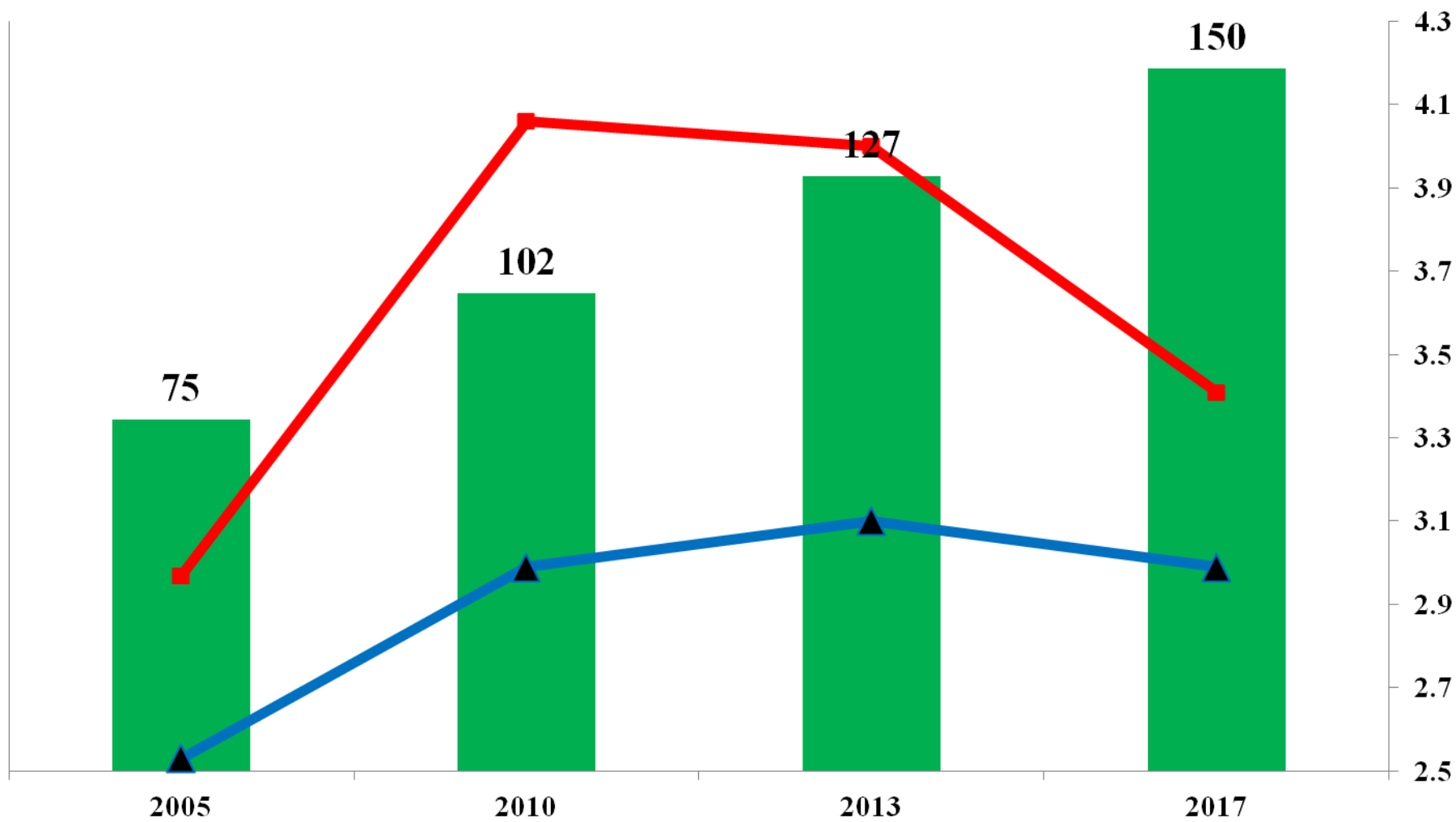
Grass

- **Getting Lime, P and K right**
- **Reseeding when needed**
- **“ Giving no paddock an excuse not to grow”**
- **Going into 1300-1500 kg/ha covers**
- **Baling anything over 1700kg/ha**
- **Grew 16.25t/ha at home**





■ Av. cow no. **—■ SR MP (cows/ha)** **—▲ SR WF (LU/ha)**



High Stocking Rates ?

- **We have had up to 4.4 cows/ha on MP**
- **Renting Quota and therefore outside land**
- **Using this land for whole crop**
- **Fixed milking platform**
- **Stocking Rate increased**
- **More indoor feeding requiring**
 - **More capital**
 - **More machinery**
 - **Better stockmanship**



Profit per ha V stocking rates

	2005	2010	2013	2017
Milking Platform SR (LU/ha)	2.97	4.06	4.00	3.41
Whole Farm Profit (€/ha)	€922	€1,310	€1,083	€2,990

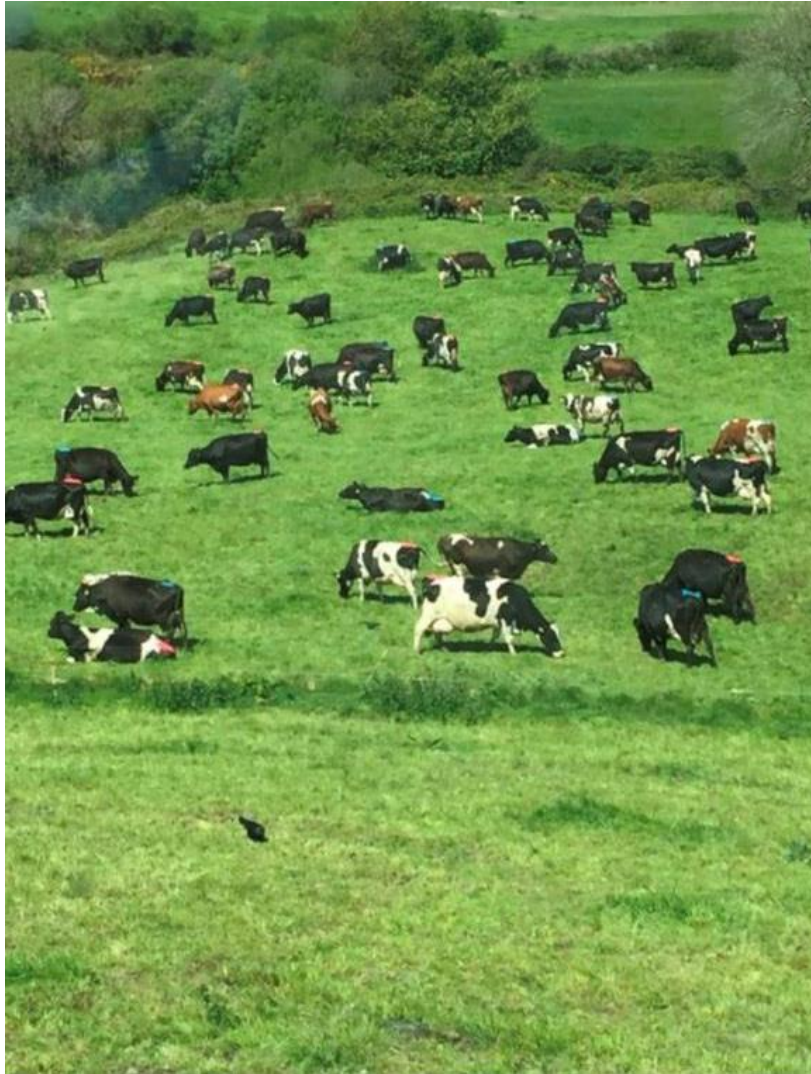
For comparison purposes this is based on a base milk price of 30c/litre at 3.6% Fat and 3.3% Prt.

Current System

Simple Grass based system

- **Stocking rate 3.4cows/ha on MP**
- **Calving to grass**
- **Milk from grass + 500kg meal/ cow**
- **Grass fed milk is producing a premium**
- **Growing consumer demand for it**

Happy Cows Happy People





The Future?

- **Contract Heifer Rearing**
- **Sustainable Milk Production**
- **Water Use**
 - Carbery farms use 7 litres water /litre milk
 - USA farms use 140 litres water /litre milk
- **Carbon Footprint**
 - Carbery farms use 1.04kg of CO² per litre
 - European farms use 1.5kg of CO² per litre
 - We will all be growing trees in the future

West Cork Farm Tours



- **WCFA?**
- **Celtic Ross Hotel**
- **Happy cows grazing grass outside**

Denis & Collette O'Donovan

Wild Atlantic Way

