

Duckspool Farm

“Operating a high profit dairy farm with medium levels of input”



James Bros Enterprises Ltd

Duckspool

Wiston

Pembrokeshire

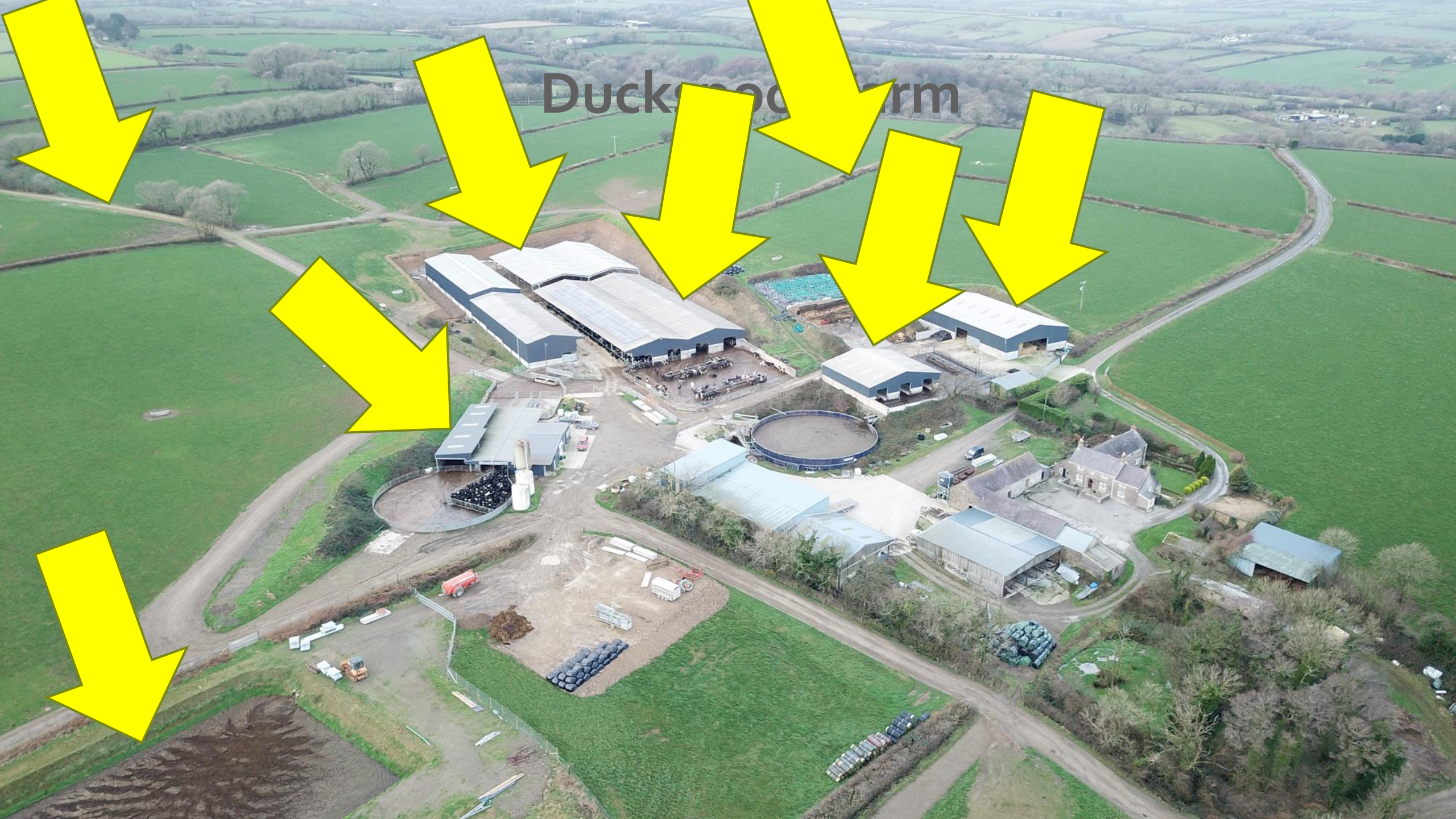
SA62 4QB

Background

- Duckspool Farm, Wiston, Mid Pembrokeshire
- Duckspool farm purchased in 2009 (300 acres)
- Part of James Bros. enterprise - in partnership for 35 years
- BSC Agriculture at Harper Adams including a 12 month placement in New Zealand (2004)
- British Grassland Farmer of the Year 2017

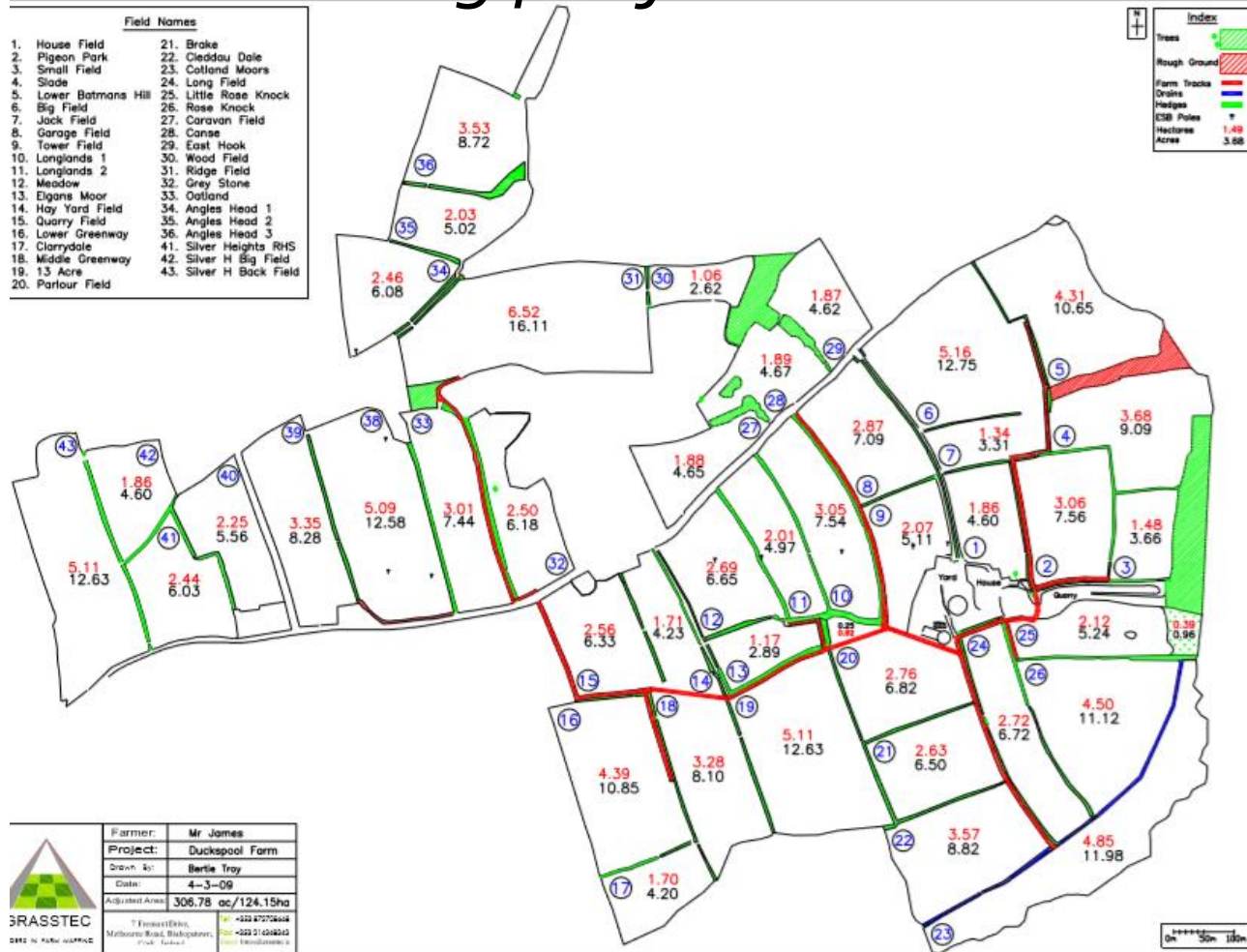


Duckmoor Farm



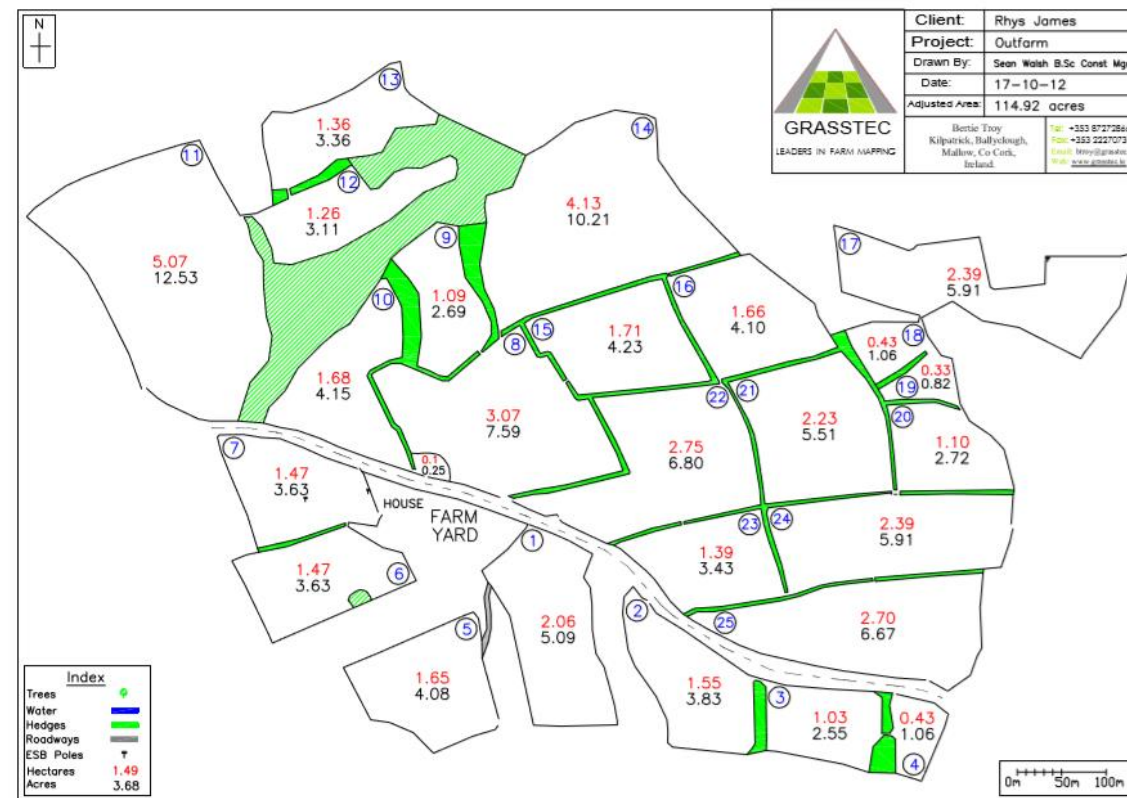
Duckspool

Milking platform – 122ha



Water Holmes

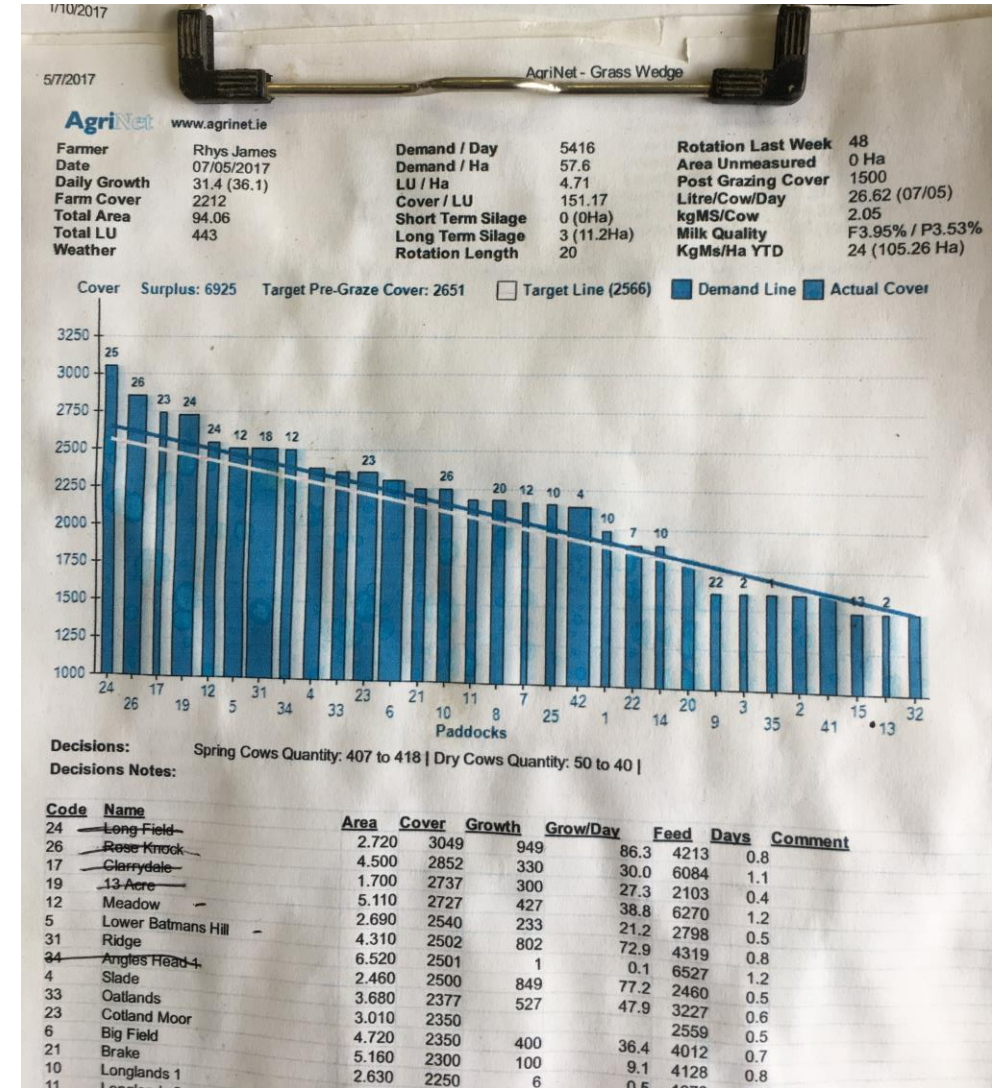
Out farm – 58ha – 3 miles away



Farmer:	Mr James
Project:	Duckspool Farm
Drawn By:	Bertie Tray
Date:	4-3-09
Adjusted Area:	306.78 ac/124.15ha

LEADERS IN FARM MAPPING	
Client:	Rhys James
Project:	Outfarm
Drawn By:	Sean Walsh B.Sc Const Mgmt
Date:	17-10-12
Adjusted Area:	114.92 acres
Bertie Tray Kilpatrick, Ballylough, Mallow, Co Cork, Ireland.	
Tel: +353 872728648 Fax: +353 2227073 Email: bertie@grasstec.ie www.grasstec.ie	

Grass – 15t DM/ha grown in 2017



Cows

- 2.7 m litres sold in 2018 from 480 cows
- Milk sold to Glanbia Cheese
- Cows average around 5800 litres/year, 474kg MS
- Fat 4.55%, Protein 3.63%
- Fed 1-1.3t concentrates per annum usually. 1.6t this year due to the drought.
- Higher stocking rate 4.4 cows/ha platform. 2.8/ha overall.
- Paddock grazed 12hr breaks set up in paddocks
- Grazing by day 10th Feb, night 1st March
- A.I 8 weeks, Bulls 4 weeks

Milk Sold 2017	Milk Sold 2018
1,896 kg MS/ha on MP	2,090 kg MS/ha on platform
1,100 kg MS/ha overall	1,267 kg MS/ha overall



Machinery Operations and Staff



- Machinery is minimal- Silage carried out by a contractor, we mow and Tedd.
- Staff- Local people, A Herdsmanager, general farm worker + relief milker.
- Slurry pumping via trailing shoe, undertaken by contractor.
- GPS controlled Fert Spreader used, Fert to grazing applied monthly. Machinery is shared between our other two farms

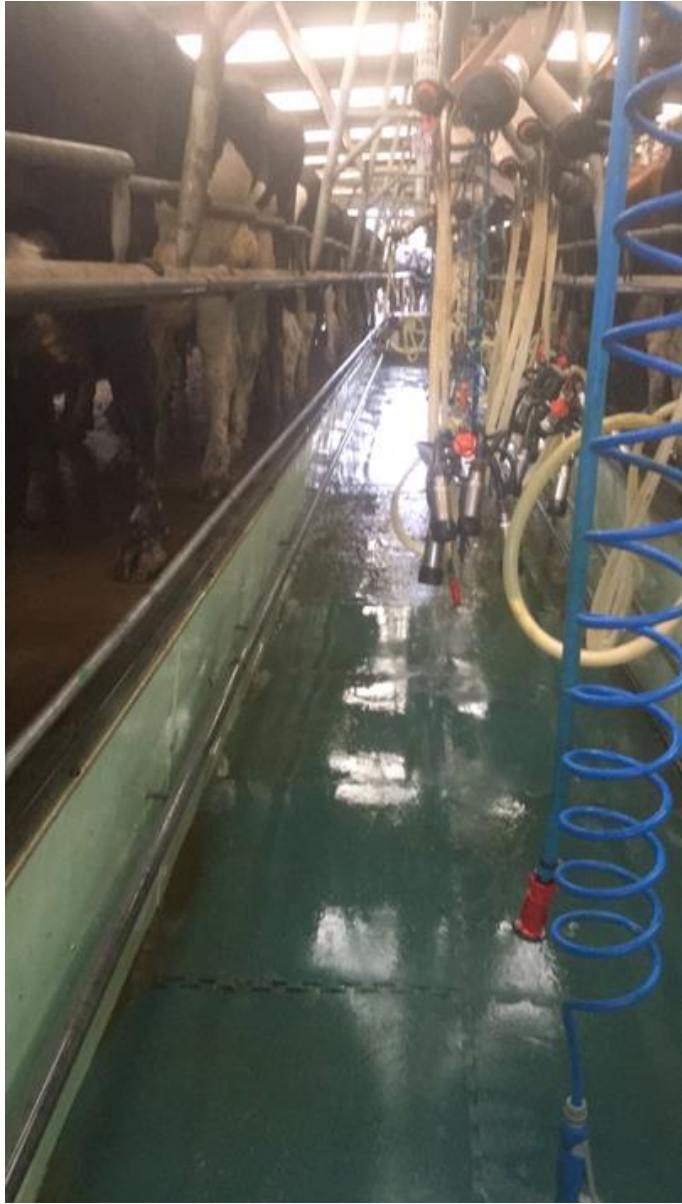
Are the extra cows producing marginal litres?

Our Comparable Farm Profit (CFP) costings 2017 data: -

- £2013/ha net profit before Rent, Finance, Depreciation, Tax and Drawings over all hectares we graze.
- Total CFP Expenses per litre have not risen since stocking at 4.4 cows/ha.
- Simple forage based system, we can make more profit on a higher milk price year.
- We would be servicing the same debt with 3 cows per ha as 4.4 cows/ha for buying the farm.
- Parcels of land within a four mile radius have been available to rent for silage.

Implementing the higher stocking rate

- Strong reliance on sourcing good quality silage to milk off in spring and early Autumn.
- Housing and Feeding infrastructure needs to be good.
- We protect our average farm cover by using silage as a supplement when demand exceeds growth.
- We religiously measure grass weekly using Agrinet to stay on track.
- Herd is flat rate fed concentrates at 4 Kgs/day.
- We get good response from concentrates, 1.3 litres per 1 kg av.



Conclusion

'Musts' for high profit dairy farm with medium levels of input on our farm: -

- ✓ Measure grass (weekly)
- ✓ Ensure top quality grass ahead of cows (must hit residuals 1500kg)
- ✓ Fertilizer must be applied on time (strictly 3- 4 weeks)
- ✓ Quality cows (no room for passengers)
- ✓ Have a good source of quality silage
- ✓ Good feeding infrastructure and housing

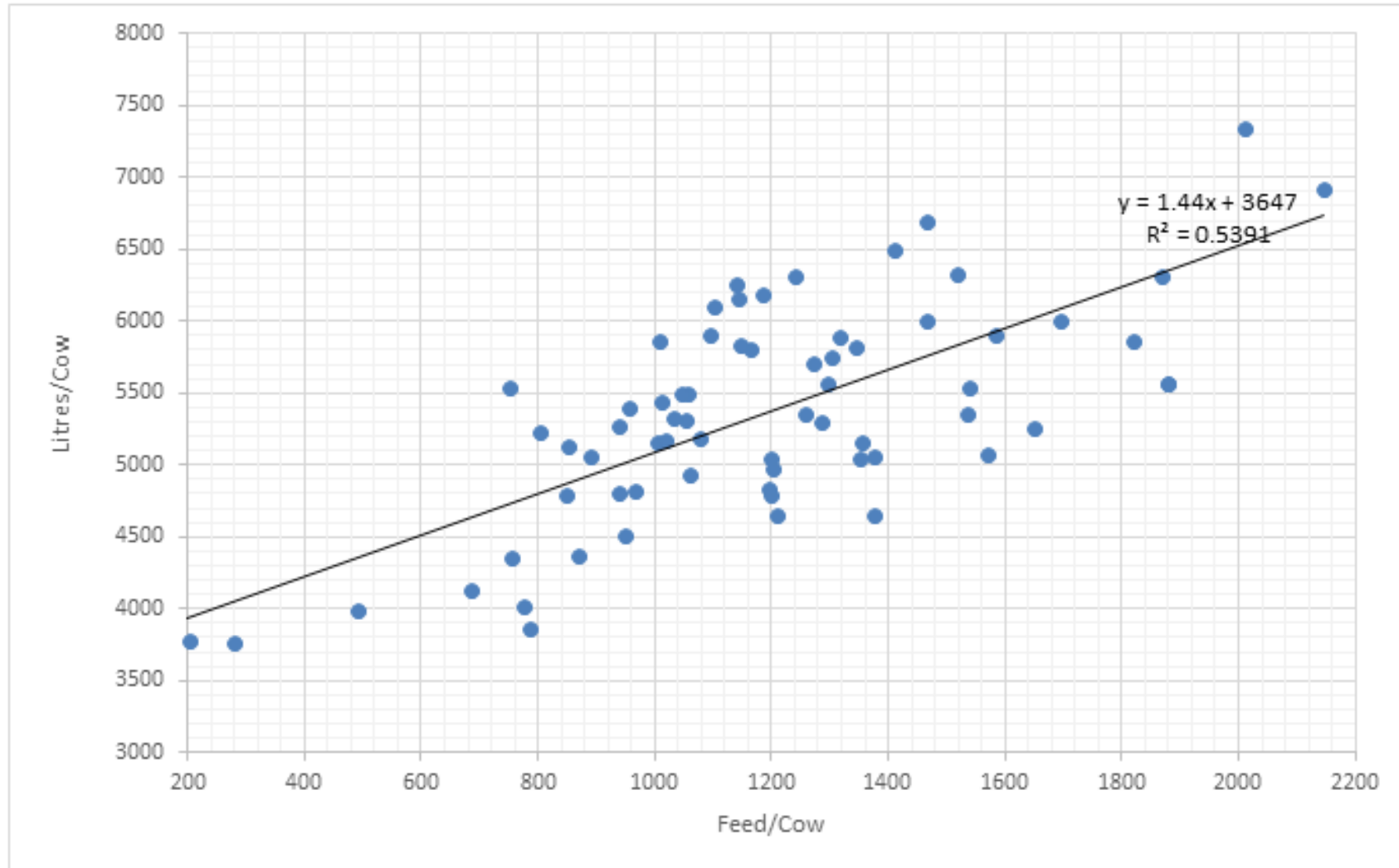


Thank you

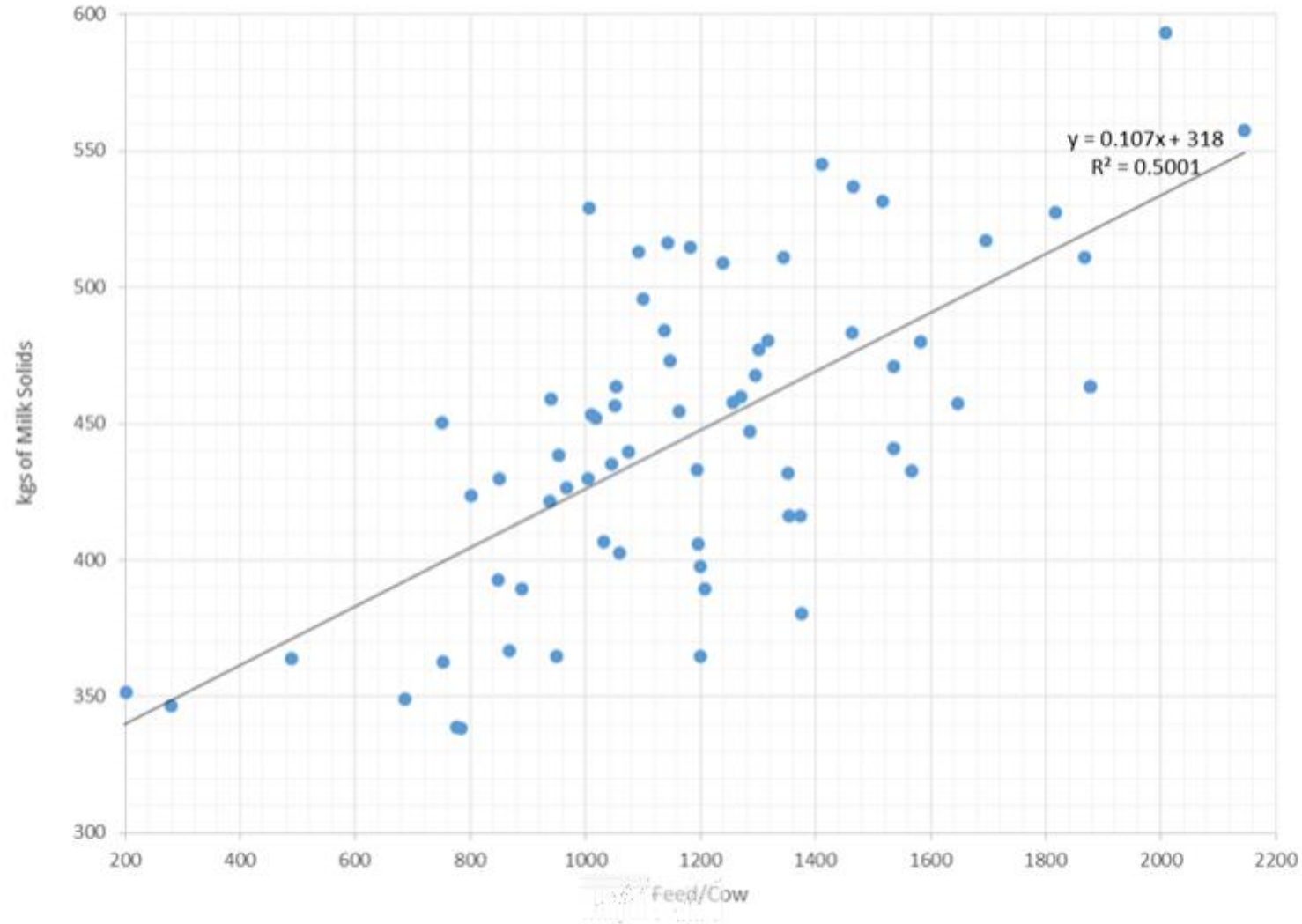
Questions?

Email: rhystrange@hotmail.com

Milk response to feeding concentrates at grass (Litres per cow)



Milk response to feeding concentrates at grass (Kg of milk solids)





- Cows are milked through a simple 28:56 Milfos parlour with ACR's
- 357 cow cubicle shed, in the process of extending to 547 cow cubicle shed, to house in calf heifers as well.

